

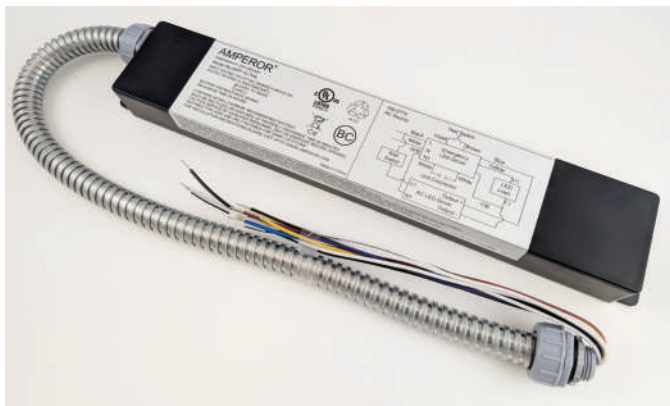
APP-5WL

Emergency Battery Pack for LED Applications, Constant Power Output Up to 5W



Features and Applications:

- for LED Emergency Light and Exit Sign Applications
- Operates in Emergency Mode for at least 90 Minutes
- Contains a Recyclable 9.6V, 1500mAH NiCad Battery, a Charger to Perform self Charging and a Constant Power Regulator to Auto Adj. Output to fit the Connected LEDs
- Class II two-wires AC input System
- Constant Power Class 2 Output up to 5W
- Outputs Current Auto Adjustable Range: 90mA - 500mA
- Outputs Voltage Range: 10 - 55Vdc
- Suitable for Dry, Damp and Indoor Locations
- A self-testing kit is included



All specifications are typical at nominal input, full load, at 25°C unless otherwise stated.

Electrical Specifications

INPUT

Input Voltage Range.	90-305Vac, (Rated: 100-277Vac)
Frequency	47-63Hz
Input Current	Max. 0.061A
Max. Leakage Current	0.5mA

BATTERY

Recyclable Ni-Cad Battery	1500mAH
Nominal Battery Voltage	9.6V
Battery Capacity	14.4WH

Discharge Mode

Auto-adjust Output Current	90mA - 500mA
Output Voltage Range	10 - 55Vdc
Constant Output Power	5W
Battery Discharge Time	90 mins.

Charge Mode

Charge Time	Less than 24 Hrs
OTP Protection Point	70°C +/- 5°C

General Specifications

Weight	977 g.
Dimension	291.0 x 66.9 x 37.6mm 11.46 x 2.63 x 1.48"
Warranty Info / MTBF	5 Yrs 100K Hrs at 25°C

Environmental Specifications

Operating Temp. (ambient)	0°C to +50°C
Storage Temp.	-20°C to +65°C
Relative Humidity	10% to 95% (non-Condensing)
Cooling	Conduction
RoHS	Compliant



EMC

Conducted Emissions	EN55015,FCC part 15 level B
Radiated Emissions	EN55015,FCC part 15 level B
Surge Protection	EN61000-4-5, level 3 L-N: 1KV

Safety Certifications

UL UL (E-File# E506614) / BC for CEC

Amperor Inc.
11320 Neeshaw Dr.
Houston, TX 77065
1-281-807-3320
<http://www.amperor.com>

Amperor Electronics (SZ) Inc.
No. 1, Venture Road (Huangyuan #2 Bldg.)
Nanchang Community, Xixian Street, Baoan District
Shenzhen, Guang Dong 518126, China
86-755-2747-5316

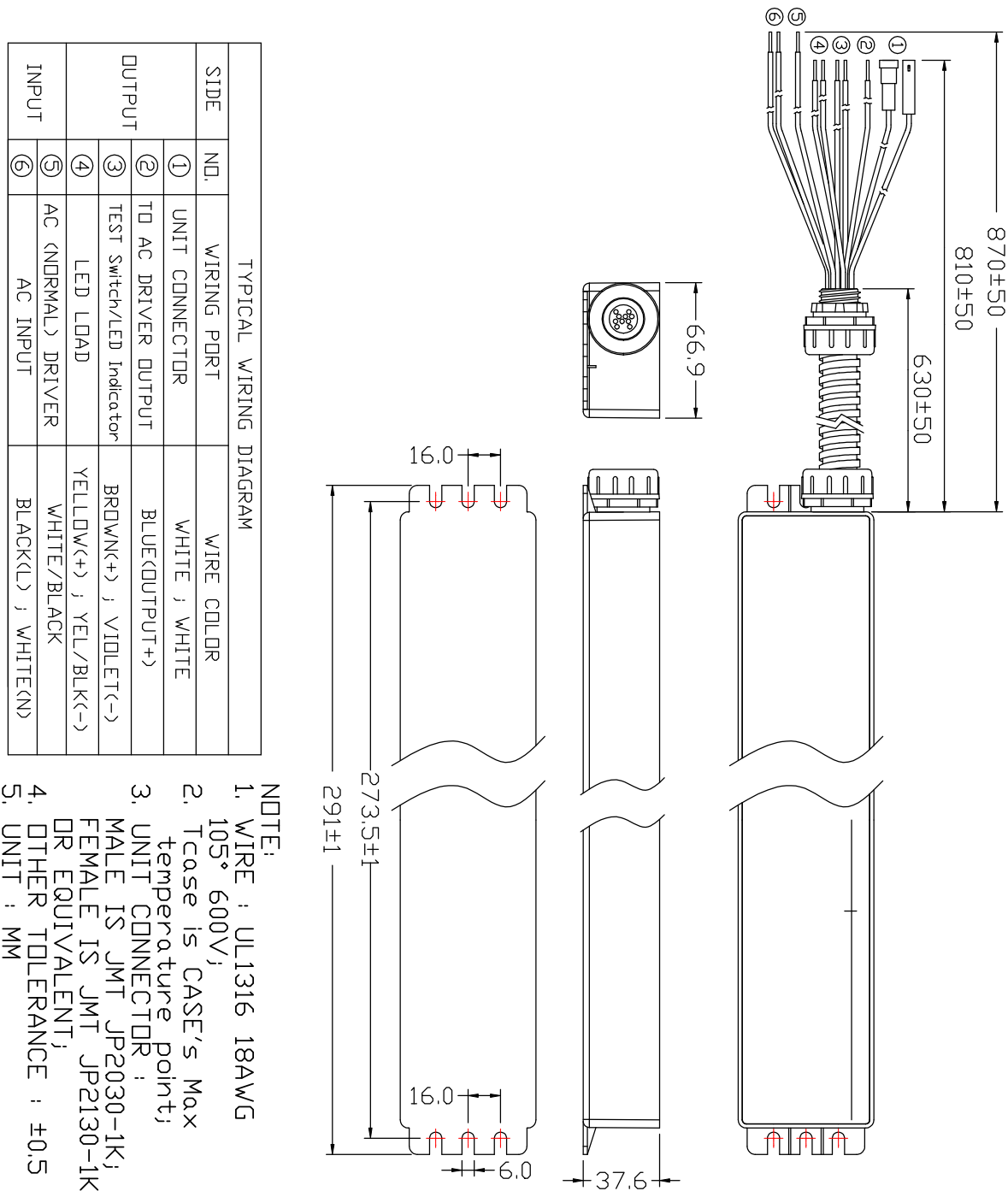
Intertek Corp., an Amperor Company
4th Fl, Far East World Center
81 Bldg D, Sec 1, XinTaiWu Rd.
Xizhi, New Taipei City, 221, Taiwan, R.O.C.
886-2-2698-2239

APP-5WL

Emergency Battery Pack for LED Applications, Constant Power Output Up to 5W

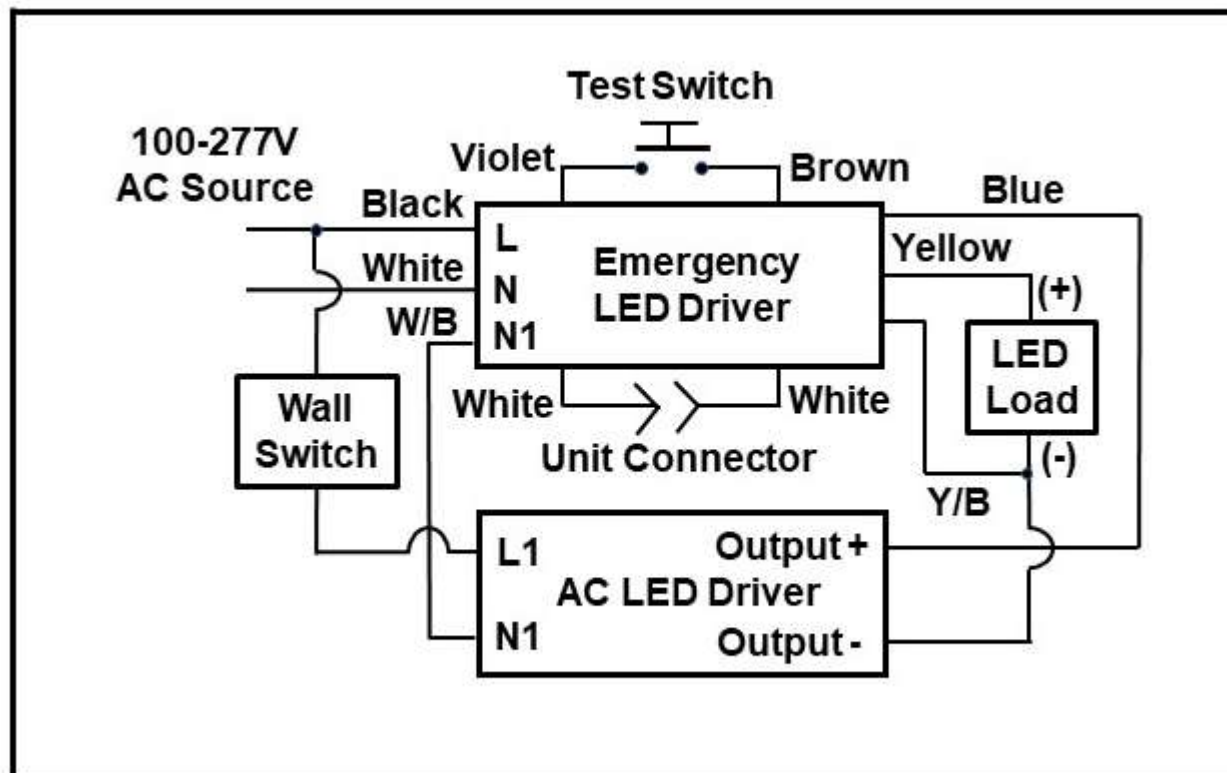


Mechanical Drawing



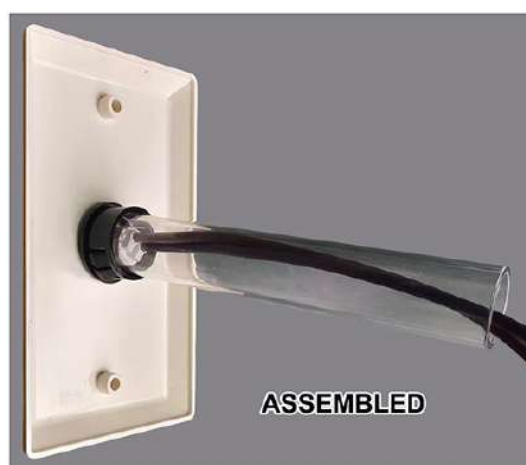
APP-5WL

Emergency Battery Pack for LED Applications, Constant Power Output Up to 5W



- Suitable for LED and Dry and Damp Applications only.
- Disconnect power prior to opening. Service restricted to qualified personnel only.
- If no wall switch is installed, wire the AC LED Driver's L straight to the Emergency LED Driver's black lead.

The Self-Testing Kit



Amperor Inc.
11320 Neeshaw Dr.
Houston, TX 77065
1-281-807-3320
<http://www.amperor.com>

Amperor Electronics (SZ) Inc.
No. 1, Venture Road (Huangyuan #2 Bldg.)
Nanchang Community, Xixian Street, Baoan District
Shenzhen, Guang Dong 518126, China
86-755-2747-5316

Intertek Corp., an Amperor Company
4th Fl, Far East World Center
81 Bldg D, Sec 1, XinTaiWu Rd.
Xizhi, New Taipei City, 221, Taiwan, R.O.C.
886-2-2698-2239